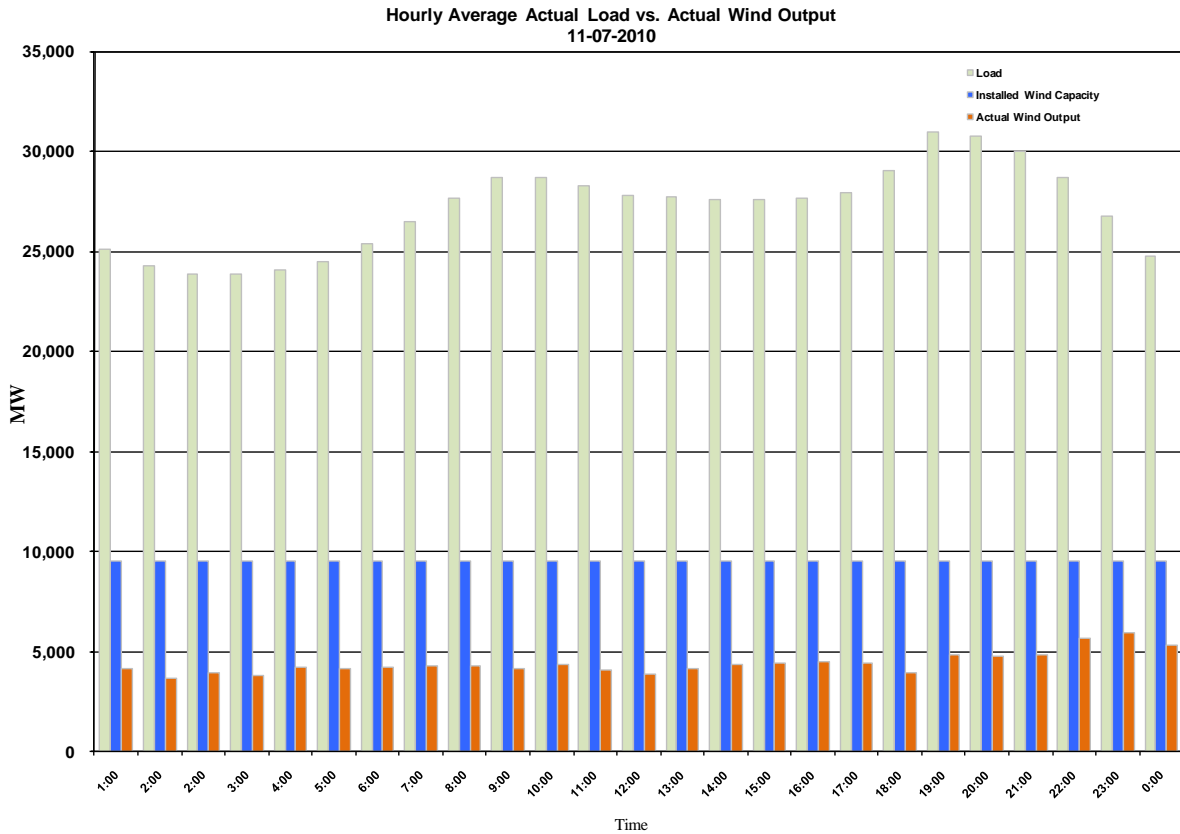




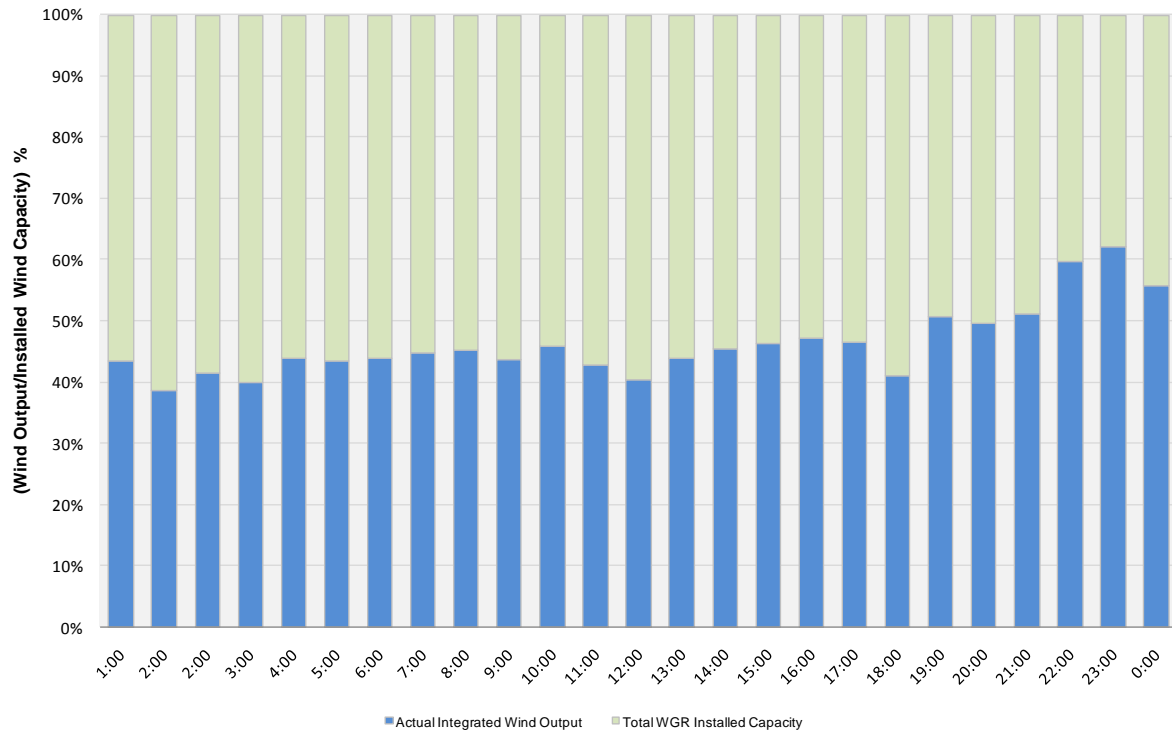
ERCOT Grid Operations Wind Integration Report: 11/07/10

Peak Load	30,999 MW
Load Peak Hour	19
Wind Record 06/12/10	7016 MW
Max Wind value	5992 MW
Wind Peak Hour	22:27:32
Wind Integration %	22.29

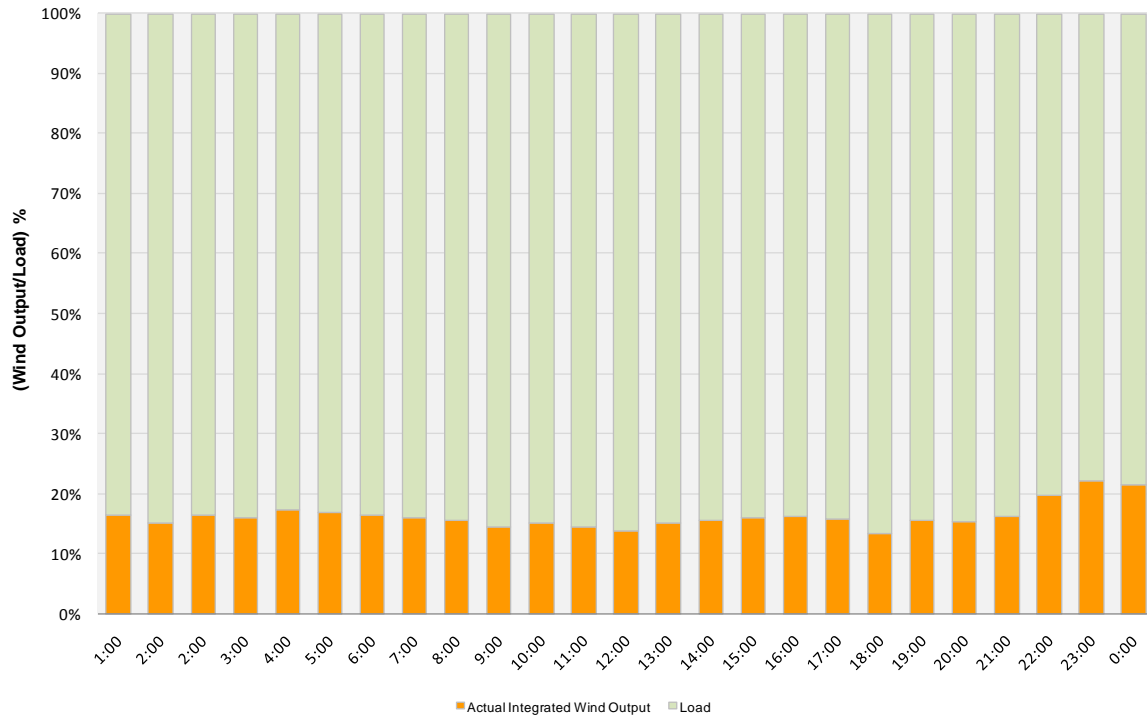




Actual Wind Output as a Percentage of the Total Installed Wind Capacity
11/07/2010



Actual Wind Output as a Percentage of the ERCOT Load
11/07/2010





ERCOT Load vs. Actual Wind Output 10/31/10 - 11/07/10

